

YELLOWSTONE NATIONAL PARK

CARIBOU-TARGHEE NATIONAL FOREST

GRAND TETON NATIONAL PARK

BRIDGER-TETON NATIONAL FOREST

CARIBOU-TARGHEE NATIONAL FOREST

BRIDGER-TETON NATIONAL FOREST

BRIDGER-TETON NATIONAL FOREST

BRIDGER-TETON NATIONAL FOREST

GROS VENTRE WILDERNESS

JOHN D. ROCKEFELLER, JR. MEMORIAL PARKWAY

TETON RANGE

JACKSON HOLE

NATIONAL ELK REFUGE

JACKSON

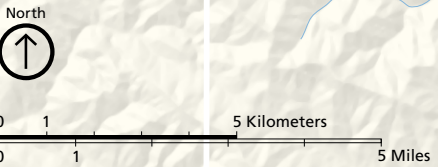
- Turnout or overlook
- Distance indicator
- Unpaved road (4-wheel drive recommended)
- Multi-Use Pathway
- Trail

- Ranger station
- Self-guiding trail
- Horseback riding
- Marina

- Food service
- Store
- Gas station

- Lodging
- Campground
- Tent-only campground

Do not use this map for backcountry hiking. Buy USGS topographic maps at visitor centers.



Camping along Grassy Lake Road
Fourteen primitive sites are free; first-come, first-served; and have a picnic table, metal fire ring, pit toilet, but no potable water.

Flagg Ranch Information Station
Headwaters Lodge & Cabins at Flagg Ranch Trailhead

Colter Bay Visitor Center

Jenny Lake Visitor Center

Craig Thomas Discovery and Visitor Center

National Museum of Wildlife Art

Road not recommended for trailers or RVs. Closed in winter.

Road closed from early November to mid-May

Road closed to trucks, RVs, and trailers

Roads closed in winter

Road closed in winter

Road closed in winter

Road closed in winter

Road closed in winter

Road closed in winter

Road closed in winter

Road closed in winter

Road closed in winter

Road closed in winter

Road closed in winter